

# GASPARILLA

4 BEDS • 2 BATHS • 1,810 SF A/C

SIGNATURE SERIES



**CHRISTOPHER  
ALAN HOMES**  
DREAMS WITHIN REACH

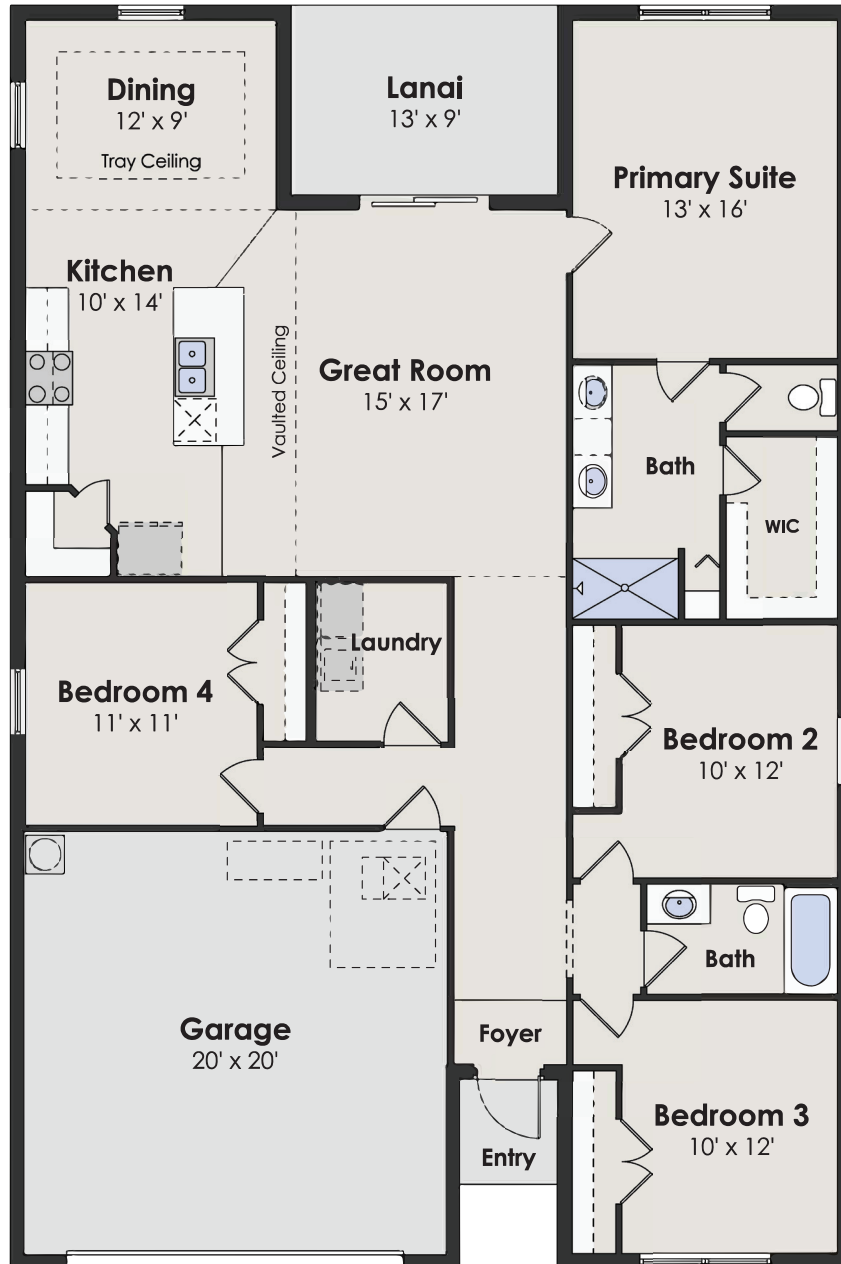
# GASPARILLA

4 BEDS • 2 BATHS • 1,810 SF A/C

SIGNATURE SERIES

## SQUARE FEET

living a/c	1,810
lanai	114
garage	434
entry	23
<b>total</b>	<b>2,381</b>



**CHRISTOPHER  
ALAN HOMES**  
DREAMS WITHIN REACH

855.44.MYCAH | [ChristopherAlanHomes.com](https://ChristopherAlanHomes.com)

Features, amenities, equipment, materials, floor plans, elevations, colors, and designs vary and are subject to changes or substitution without notice. Items shown are artist's renderings and may contain options that are not standard on all models or not included in the purchase price. Availability and pricing may vary and are subject to change without notice. Square footage/acreage/dimensions are estimated; actual square footage/acreage/dimensions may differ. Garage/bay sizes may vary from home to home and may not accommodate all vehicles. Purchasers should refer to the applicable purchase and sale agreement for final terms and conditions. ©Christopher Alan Homes #CGC1534121, #CRC1333857. Christopher Alan Realty LLC #CQ1055390. 08/24.



08/09/24