

GRAND CAYMAN

SPOT LOTS

3 beds + den • 2 baths • 2 or 3-car garage • 1,974 sf a/c

2-CAR GARAGE



ELEVATION E

3-CAR GARAGE



ELEVATION E



ELEVATION F



ELEVATION F



CHRISTOPHER
ALAN HOMES
DREAMS WITHIN REACH

GRAND CAYMAN

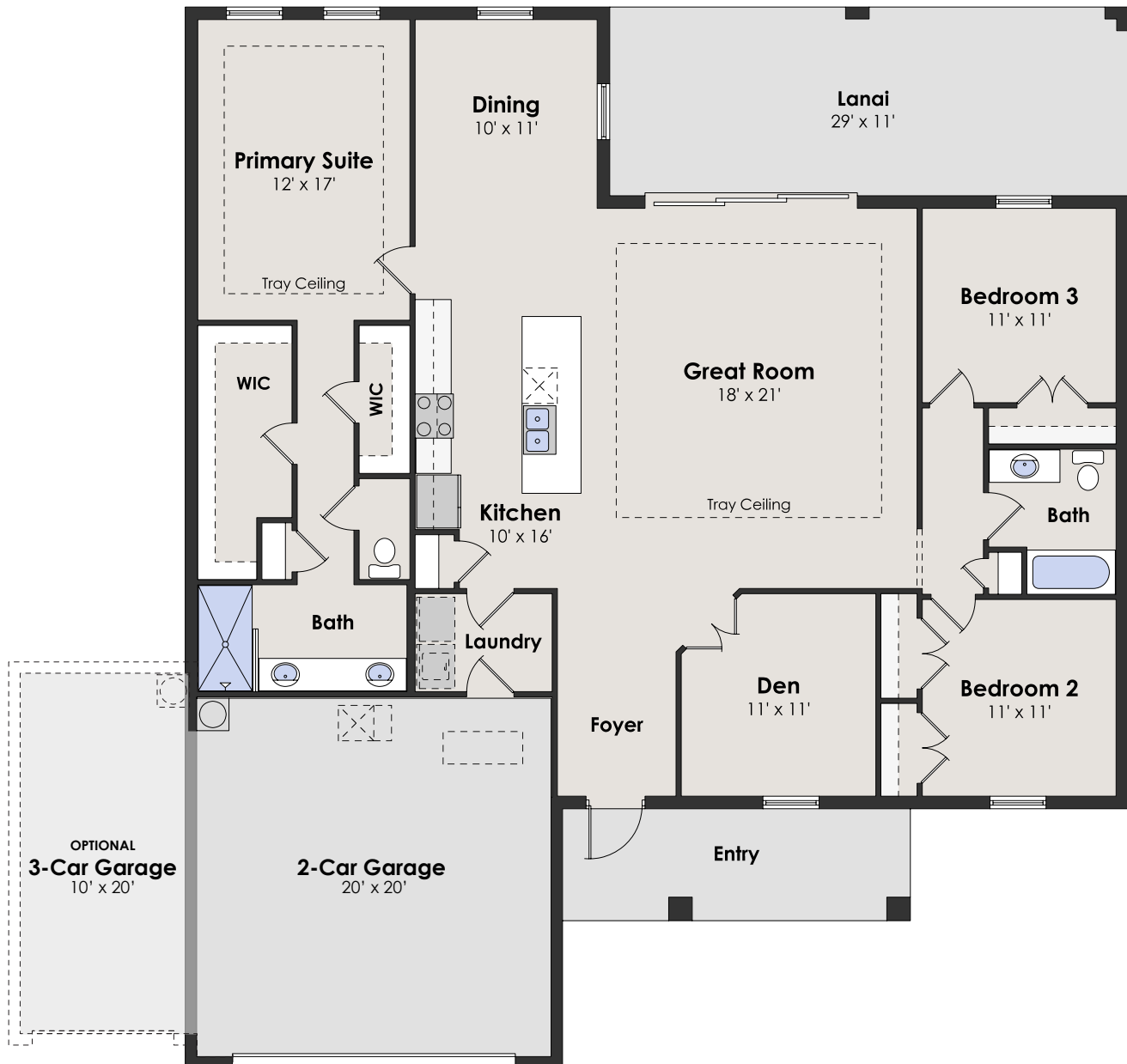
3 beds + den • 2 baths • 2 or 3-car garage • 1,974 sf a/c

2-CAR SQ. FT.

living a/c	1,974
lanai	313
garage	444
entry	125
total	2,856

3-CAR SQ. FT.

living a/c	1,974
lanai	313
garage	662
entry	125
total	3,074



SPOT LOTS

855.44.MYCAH
ChristopherAlanHomes.com



**CHRISTOPHER
ALAN HOMES**

Features, amenities, equipment, materials, floor plans, elevations, colors, and designs vary and are subject to changes or substitution without notice. Items shown are artist's renderings and may contain options that are not standard on all models or not included in the purchase price. Availability and pricing may vary and are subject to change without notice. Square footage/acreage/dimensions are estimated; actual square footage/acreage/dimensions may differ. Garage/bay sizes may vary from home to home and may not accommodate all vehicles. Purchasers should refer to the applicable purchase and sale agreement for final terms and conditions. © Christopher Alan Homes #CGC1532837. Christopher Alan Realty LLC #CQ1055390. 06/23.

