

HIBISCUS

3 BEDS • 2 BATHS • 1,687 SF A/C

LUXE SERIES



2-CAR GARAGE



3-CAR GARAGE



**CHRISTOPHER
ALAN HOMES**
DREAMS WITHIN REACH

HIBISCUS

3 BEDS • 2 BATHS • 1,687 SF A/C

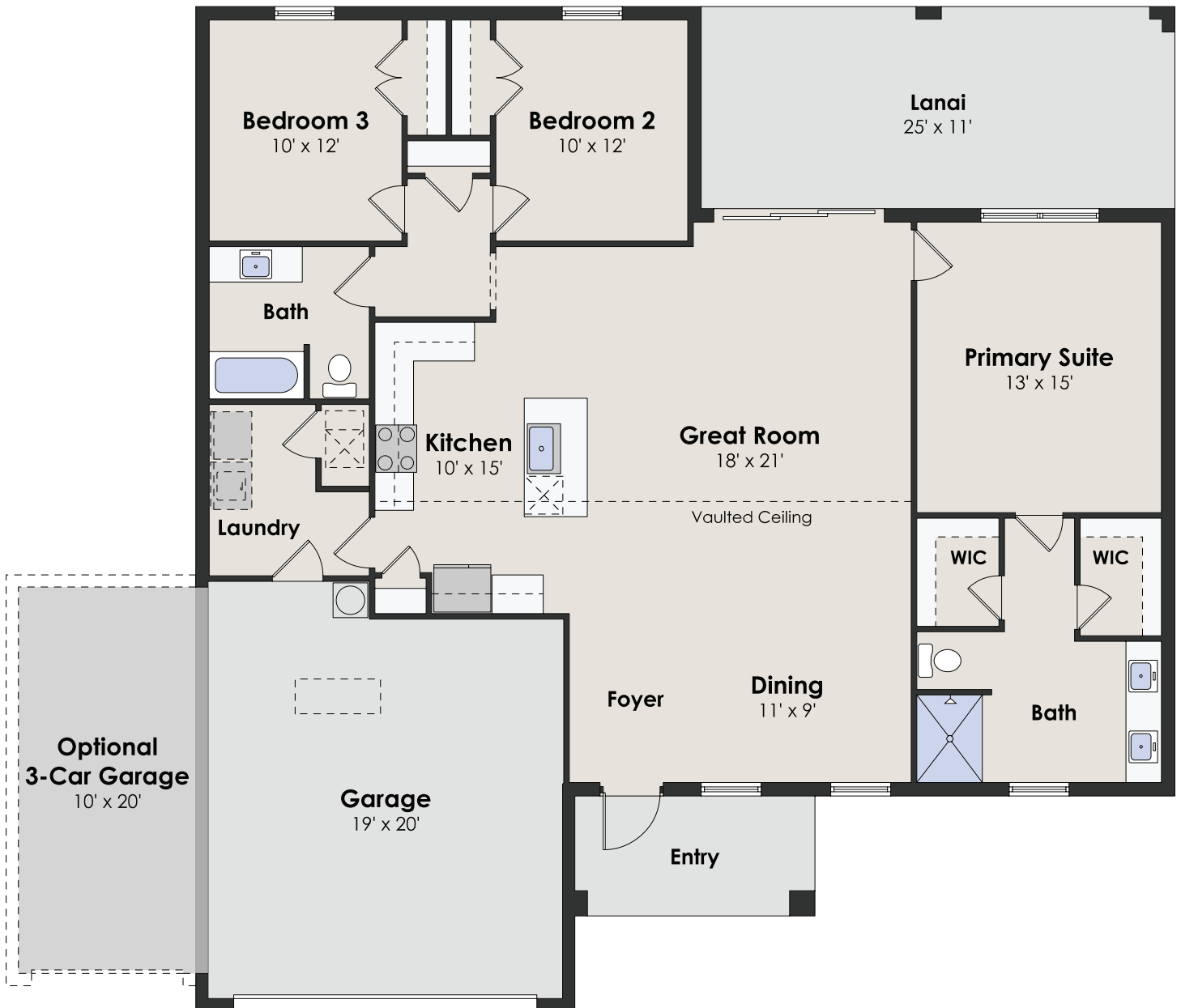
LUXE SERIES

2-CAR GARAGE

living a/c	1,687
lanai	267
garage	426
entry	80
total	2,460

3-CAR GARAGE

living a/c	1,687
lanai	267
garage	642
entry	80
total	2,676



**CHRISTOPHER
ALAN HOMES**
DREAMS WITHIN REACH

855.44.MYCAH | ChristopherAlanHomes.com

Features, amenities, equipment, materials, floor plans, elevations, colors, and designs vary and are subject to changes or substitution without notice. Items shown are artist's renderings and may contain options that are not standard on all models or not included in the purchase price. Availability and pricing may vary and are subject to change without notice. Square footage/acreage/dimensions are estimated; actual square footage/acreage/dimensions may differ. Garage/bay sizes may vary from home to home and may not accommodate all vehicles. Purchasers should refer to the applicable purchase and sale agreement for final terms and conditions. ©Christopher Alan Homes #CGC1534121, #CRC1333857. Christopher Alan Realty LLC #CQ1055390. 01/25.



03/13/25