

# SANDPIPER

4 BEDS • 2 BATHS • 1,593 SF A/C

SIGNATURE SERIES



**CHRISTOPHER  
ALAN HOMES**  
DREAMS WITHIN REACH

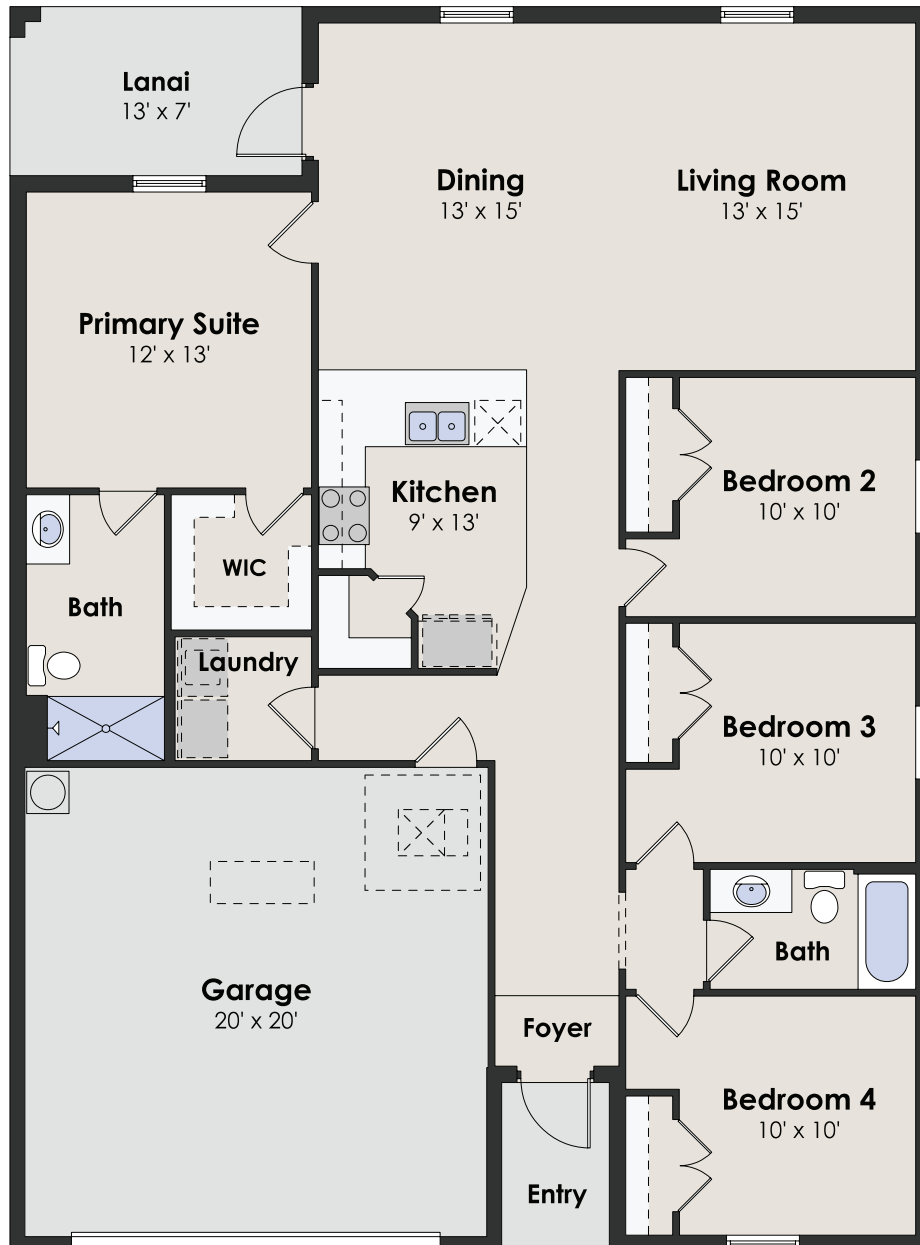
# SANDPIPER

4 BEDS • 2 BATHS • 1,593 SF A/C

SIGNATURE SERIES

## SQUARE FEET

living a/c	1,593
lanai	93
garage	440
entry	34
<b>total</b>	<b>2,160</b>



**CHRISTOPHER  
ALAN HOMES**  
DREAMS WITHIN REACH

855.44.MYCAH | [ChristopherAlanHomes.com](http://ChristopherAlanHomes.com)

Features, amenities, equipment, materials, floor plans, elevations, colors, and designs vary and are subject to changes or substitution without notice. Items shown are artist's renderings and may contain options that are not standard on all models or not included in the purchase price. Availability and pricing may vary and are subject to change without notice. Square footage/acreage/dimensions are estimated; actual square footage/acreage/dimensions may differ. Garage/bay sizes may vary from home to home and may not accommodate all vehicles. Purchasers should refer to the applicable purchase and sale agreement for final terms and conditions. ©Christopher Alan Homes #CGC1534121, #CRC1333837. Christopher Alan Realty LLC #CQ1055390. 01/25.



03/12/25