

SANTA MARIA

3 BEDS • 2 BATHS • 1,285 SF A/C

SIGNATURE SERIES



**CHRISTOPHER
ALAN HOMES**
DREAMS WITHIN REACH

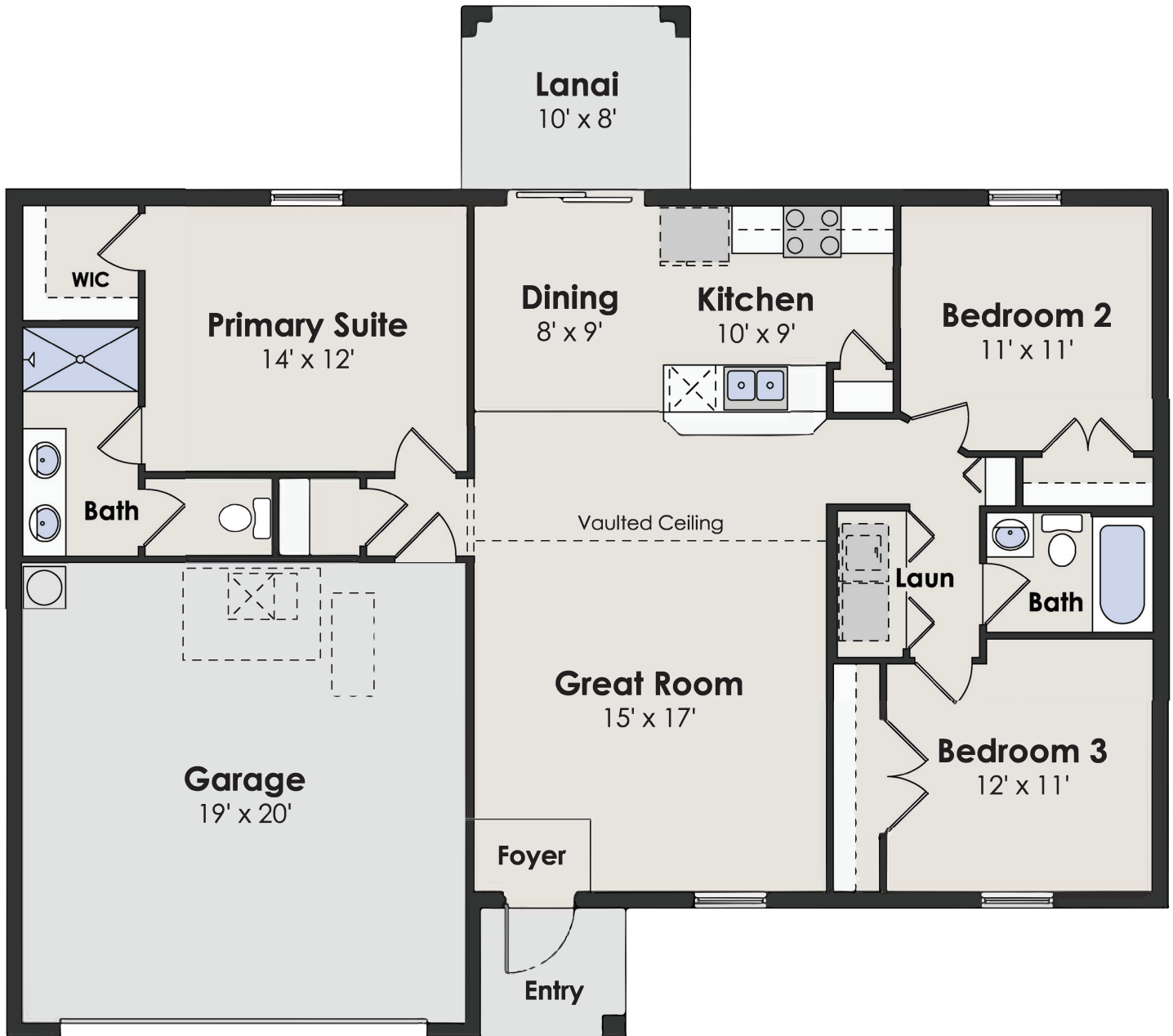
SANTA MARIA

3 BEDS • 2 BATHS • 1,285 SF A/C

SIGNATURE SERIES

SQUARE FEET

living a/c	1,285
lanai	80
garage	420
entry	36
total	1,821



**CHRISTOPHER
ALAN HOMES**
DREAMS WITHIN REACH

855.44.MYCAH | ChristopherAlanHomes.com

Features, amenities, equipment, materials, floor plans, elevations, colors, and designs vary and are subject to changes or substitution without notice. Items shown are artist's renderings and may contain options that are not standard on all models or not included in the purchase price. Availability and pricing may vary and are subject to change without notice. Square footage/acreage/dimensions are estimated; actual square footage/acreage/dimensions may differ. Garage/bay sizes may vary from home to home and may not accommodate all vehicles. Purchasers should refer to the applicable purchase and sale agreement for final terms and conditions. ©Christopher Alan Homes #CGC1534121, #CRC1333857. Christopher Alan Realty LLC #CQ1055390. 01/25.



03/12/25