



CHRISTOPHER  
ALAN HOMES

# GASPARILLA

**4** BED  
**2** BATH  
**2 CAR** GARAGE



ELEVATION E



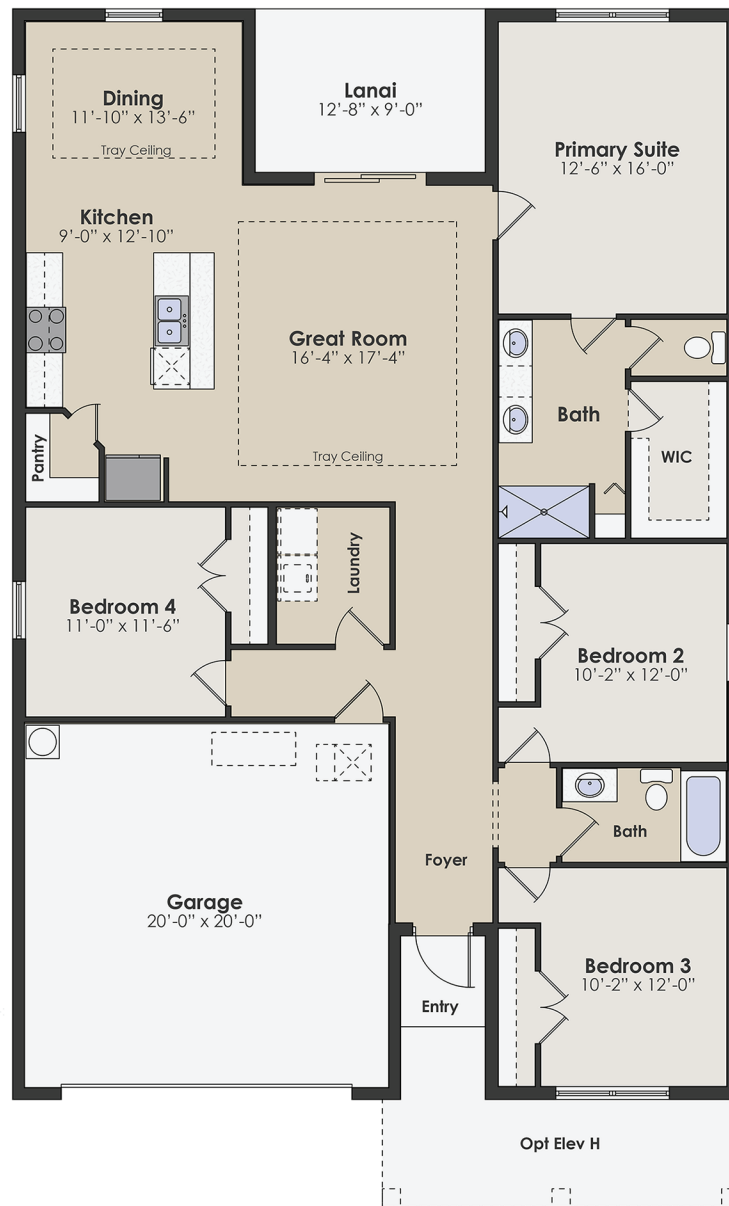
ELEVATION H



ELEVATION J



CHRISTOPHER  
ALAN HOMES



# GASPARILLA

**2,381 SQ. FT. TOTAL | 1,810 SQ.FT. AIR CONDITIONED**  
**434 SQ.FT. GARAGE | 23 SQ.FT. ENTRY | 114 SQ.FT LANAI**

Features, amenities, equipment, materials, floor plans, elevations, colors, and designs vary and are subject to changes or substitution without notice. Items shown are artist's renderings and may contain options that are not standard on all models or not included in the purchase price. Availability and pricing may vary and are subject to change without notice. Sq.ft./acreage/dimensions are estimated; actual sq.ft./acreage/dimensions may differ. Garage/bay sizes may vary from home to home and may not accommodate all vehicles. Purchasers should refer to the applicable purchase and sale agreement for final terms and conditions. © Christopher Alan Homes, LLC #CGC1509627. Christopher Alan Realty, LLC #CQ1055390. 7/22

